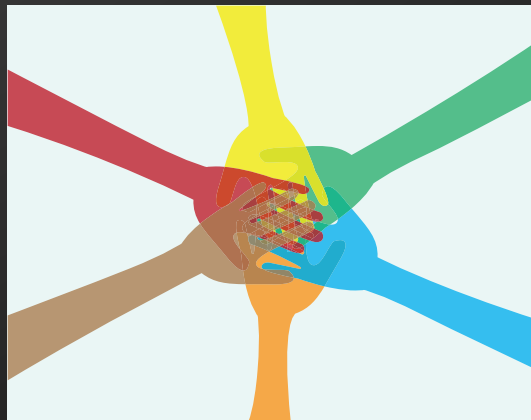


Quality Improvement to Achieve Health Equity:  
*Harnessing the Power of Academic-Community  
Partnerships*



**Tumaini Rucker Coker, MD, MBA**  
Associate Professor, UW Pediatrics  
Director of Research, Center for Diversity & Health Equity

Of all the forms of inequality, injustice in health is the most shocking and inhumane.

- Dr. Martin Luther King, Jr.

# Disclosure

- The speaker has documented no financial relationships to disclose or Conflicts of Interest (COIs) to resolve.
- This presentation will not involve discussion of unapproved or off-label, experimental or investigational use.

1. What impact might QI & I Science have on disparities?
2. How can QI & I Science work be designed to increase equity?
3. How can academic-community partnerships be leveraged for QI science to improve health equity?

#### 4. Practical Tools



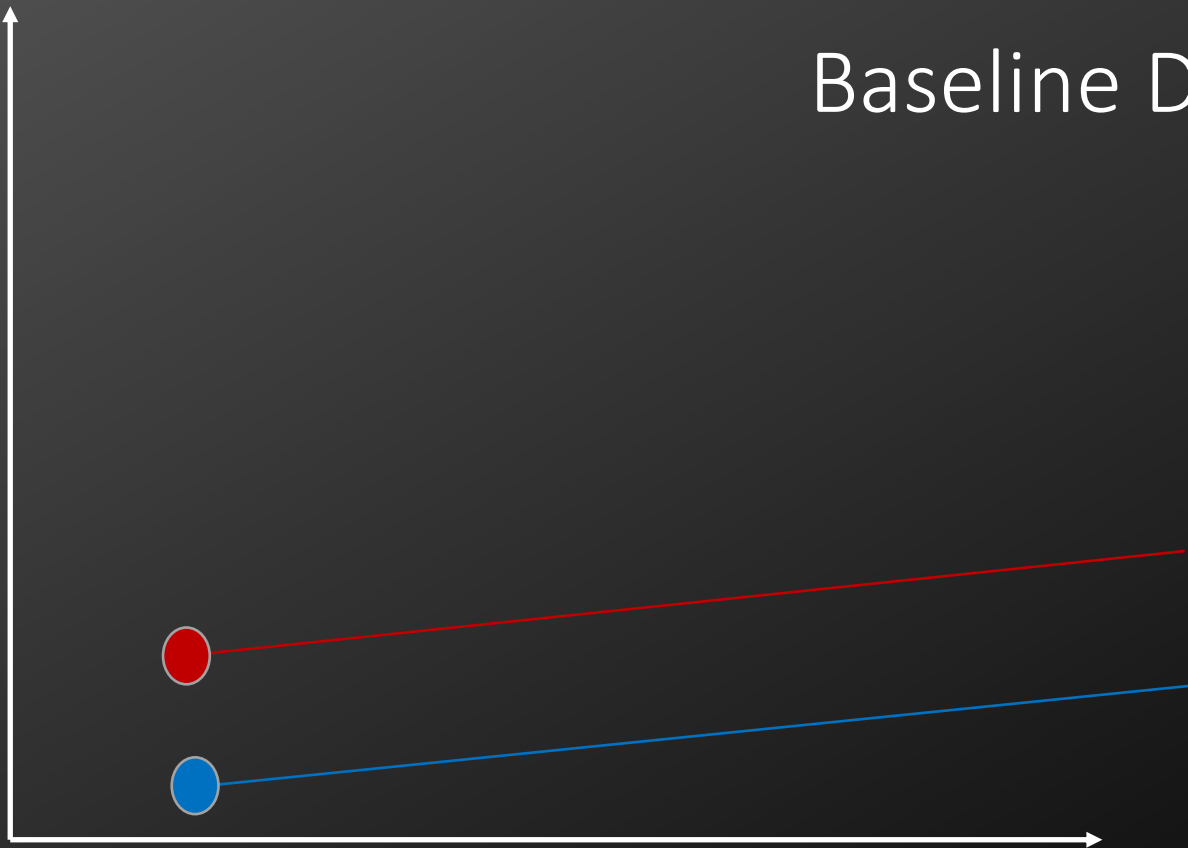
- **Quality Improvement Science** seeks measurable changes in the processes of care and outcomes
- **Implementation Science** examines methods to promote the adoption and integration of evidence-based practices, interventions and policies into routine health care and public health settings

*Improve the Quality of Care to Impact Outcomes*

Kao L.S. (2014) Implementation Science and Quality Improvement. In: Dimick J., Greenberg C. (eds) Success in Academic Surgery: Health Services Research. Success in Academic Surgery. Springer, London

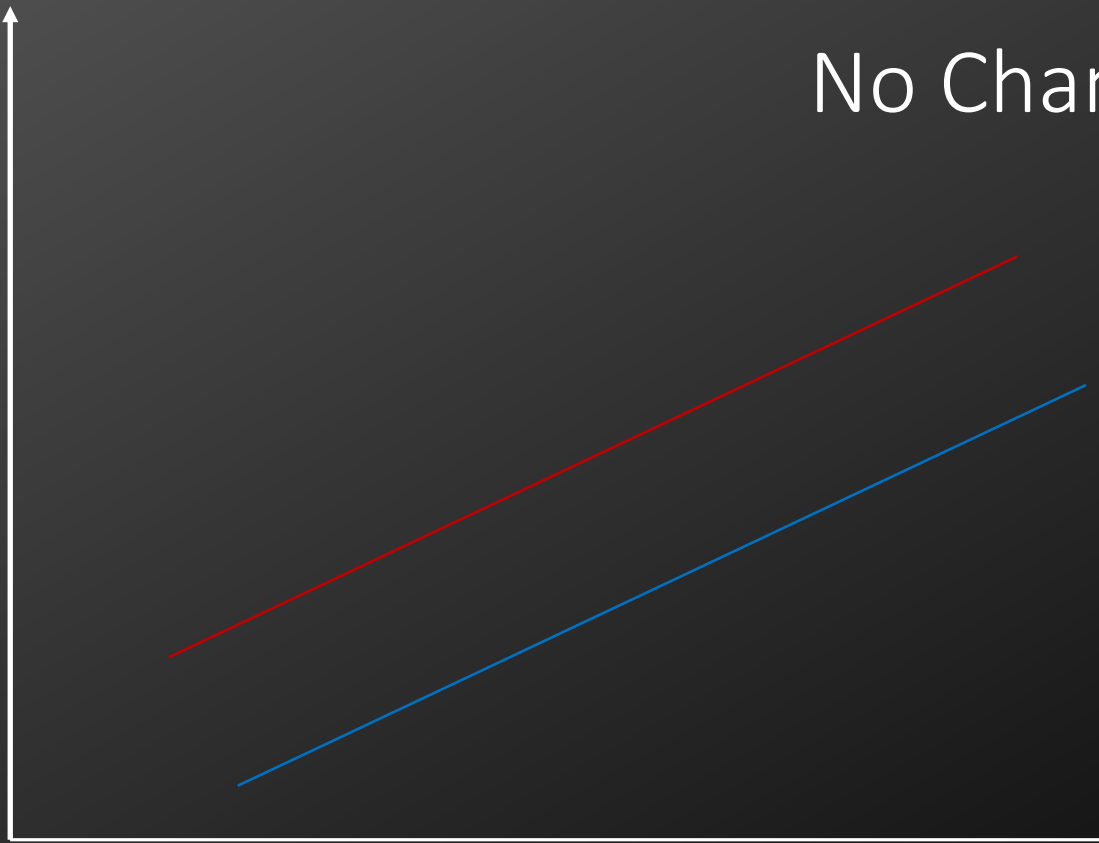
What impact might QI & I Science have on healthcare disparities?

# Baseline Disparity



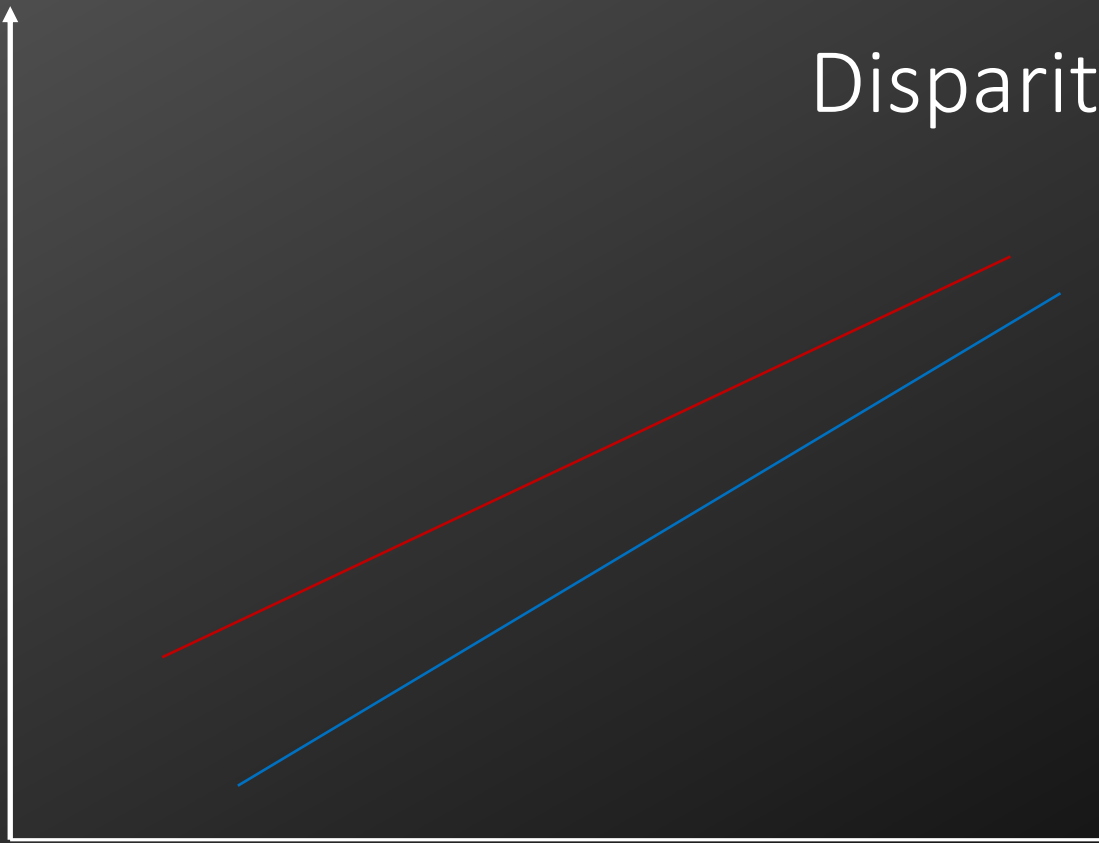
Quality improvement: no quality without equity? Poytner M, Hamblin R, Shuker C, Cincotta J. 2017  
Weinick RM, Hasnain-Wynia R. Quality improvement efforts under health reform: how to ensure that they help reduce disparities— not increase them. *Health Aff (Millwood)*. 2011;30[10]:1838–1839

No Change

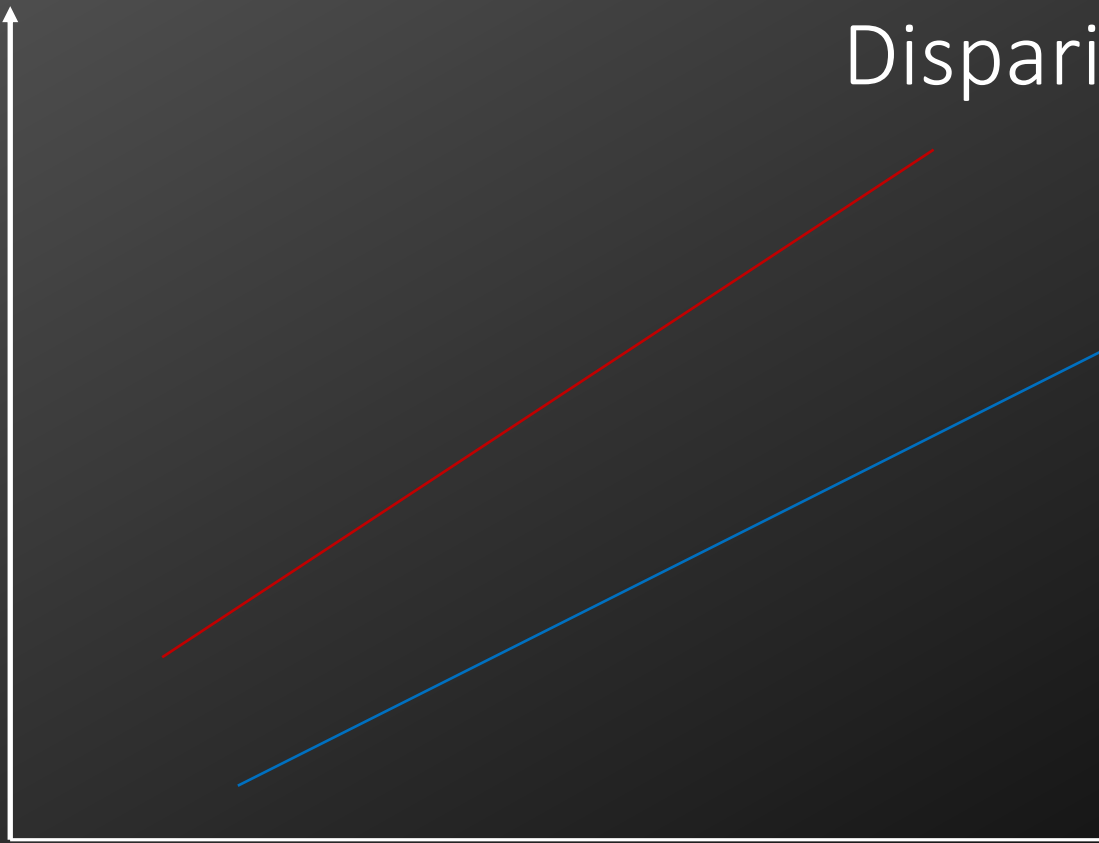




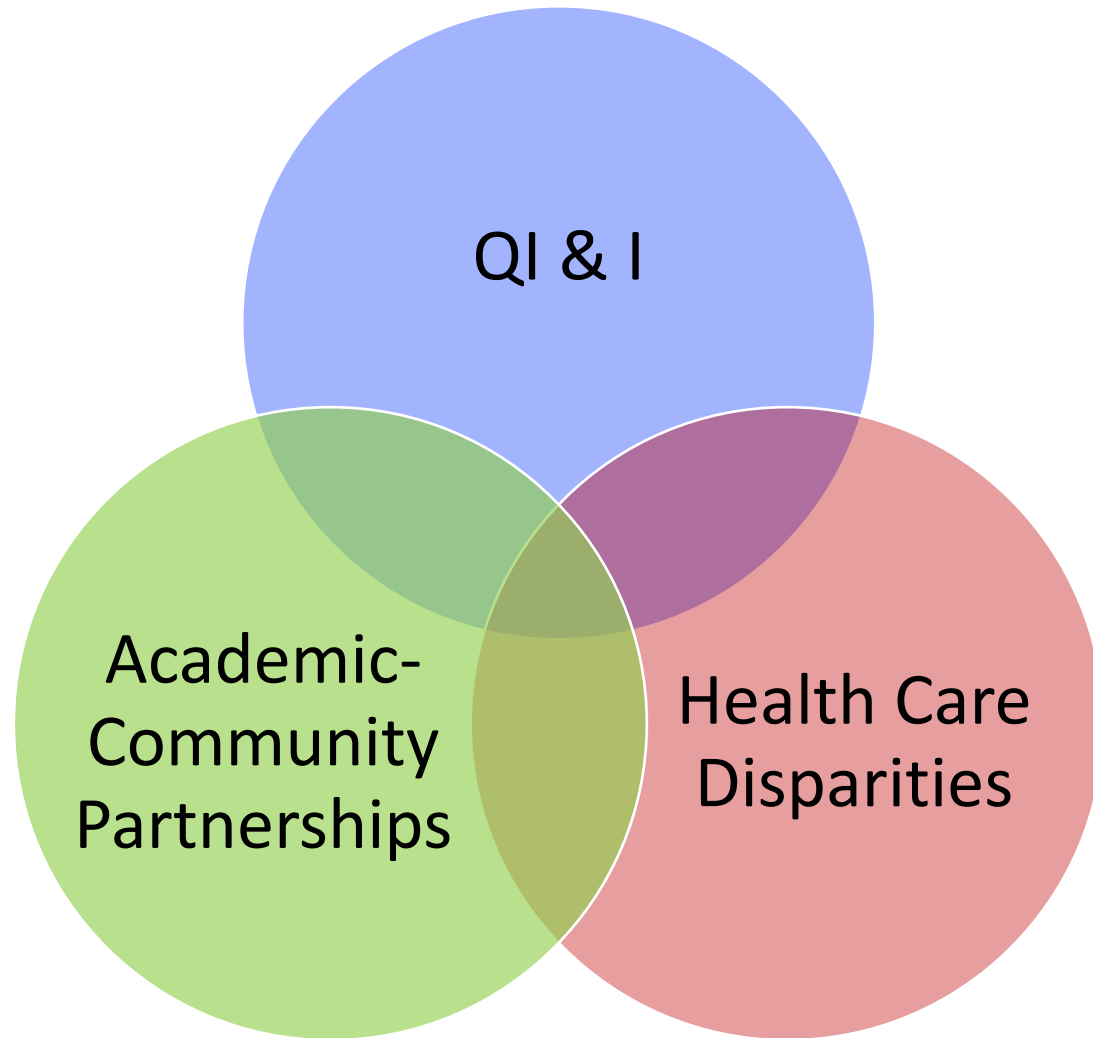
# Disparity Narrows

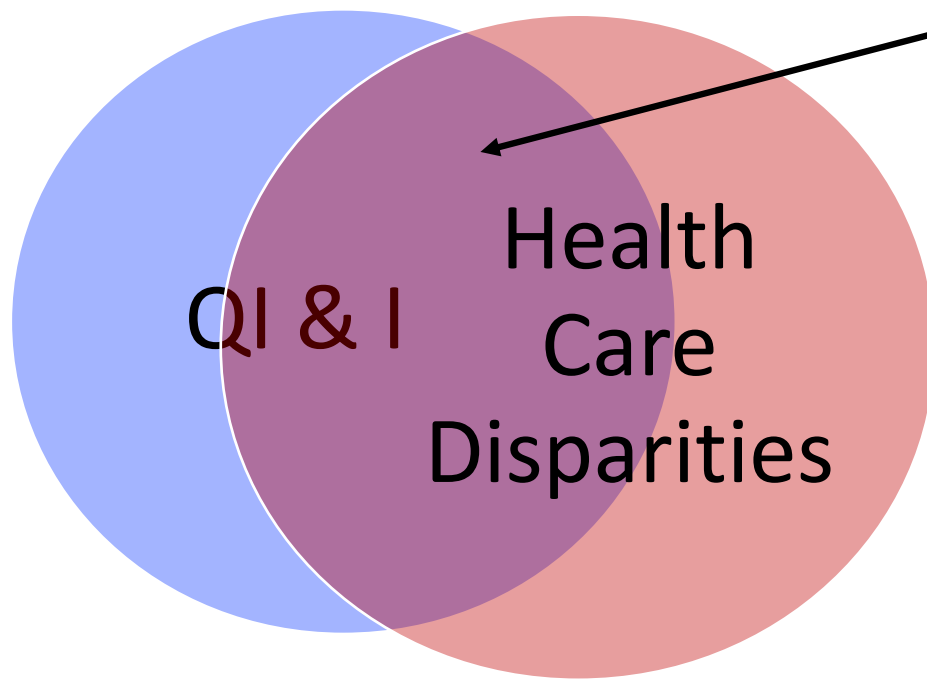


# Disparity Widens

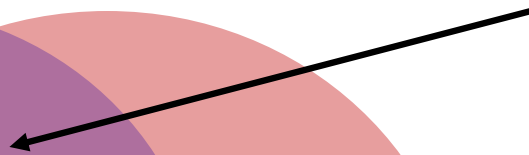


All (most) Healthcare QI & I =  
Healthcare Disparities Work





Academic  
Community  
Partnerships



# What impact might QI & I Science have on healthcare disparities?

- Maintains the disparity
- Worsens the disparity
- Reduces the disparity

How can QI & I Science work be designed to increase equity and reduce disparities?